



In Mauritius, genuineness is a matter of attitude

COUNTRY REPORT (MAURITIUS)

Rosy Appave



OSHMS & Zero-Accident Activities (Hazard Prediction Training (KYT))

JISHA Occupational Safety and Health Seminar,
March 23–March 27, 2015

Institution of Occupational Safety & Health Management (IOSHM)



The Institution of Occupational Safety & Health Management (IOSHM) first known as the Association of Health and Safety Managers was founded in 1981. It is the oldest and most representative non-governmental and non-profit organisation regrouping more than 200 occupational safety and health officers and safety professionals in Mauritius. The Institution is also an MQA registered training institution

The objectives of the Institution are to:

- Promote the profession of safety and health at work
- Look after the welfare of all its members
- Delegate members to overseas studies, attachment, seminars in view of improving their knowledge
- Advise the members on all questions relating to health and safety.
- Provide training in the safety, health and environment sector both locally and internationally.

Institution of Occupational Safety & Health Management (IOSHM)



Vision

IOSHM aspires to be the leader in the promotion of safety and health in Mauritius, to foster its code of professional conduct to members and encourage standard of excellence.

Mission Statement

IOSHM will promote safety and health awareness and responsibility among all the citizens in the country and will:

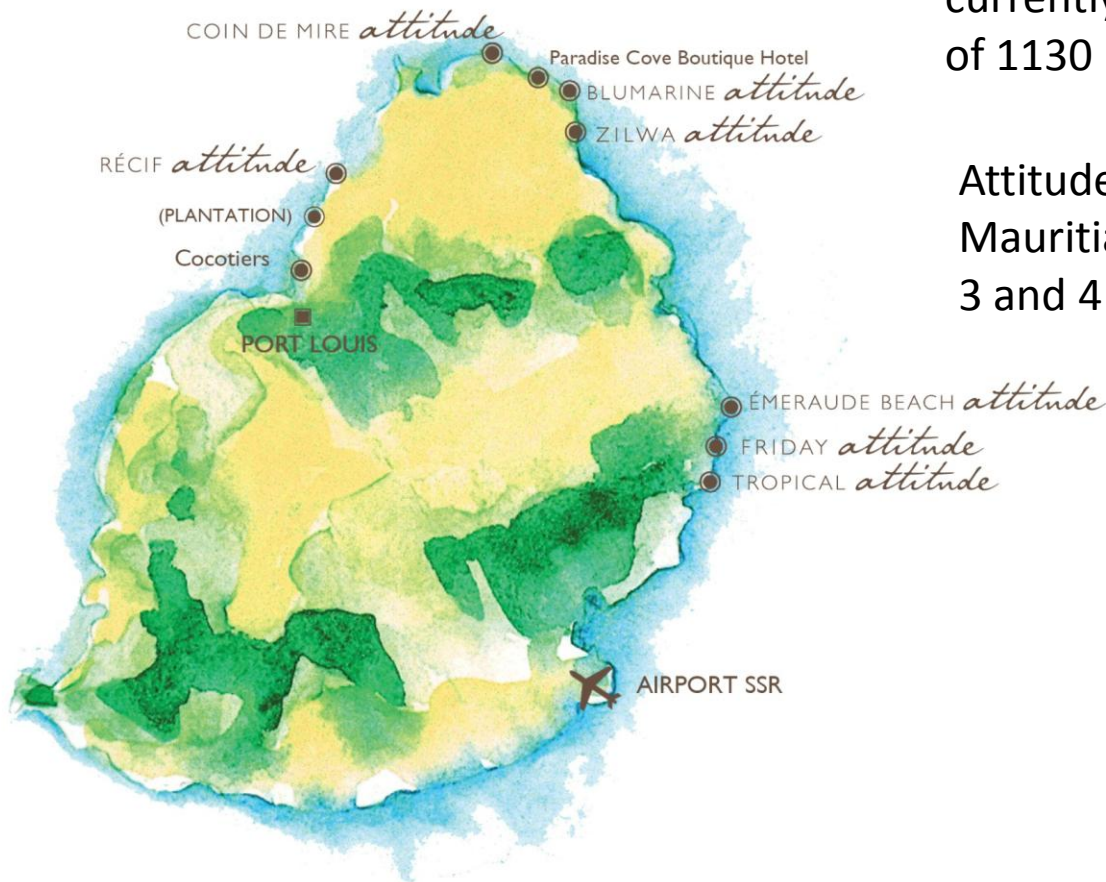
- Promote, plan and organise professional development and other related activities for its members and community at large.
- Collaborate with the government on all matters pertaining to health and safety at work.
- Secure partnership, working relationship and networking with employers, trade unions, professional bodies, educational institutions and international organisations for the promotion of safety and health.

Attitude Hospitality Management Ltd

Company : Attitude Hospitality Management Ltd
Department : Risk & Compliance Department
Title : Safety & Health Officer

Created in June 2008, Attitude Group currently manages ten hotels, offering a total of 1130 rooms.

Attitude is today a new reference in the Mauritian hotel industry within the 3 and 4 stars category.



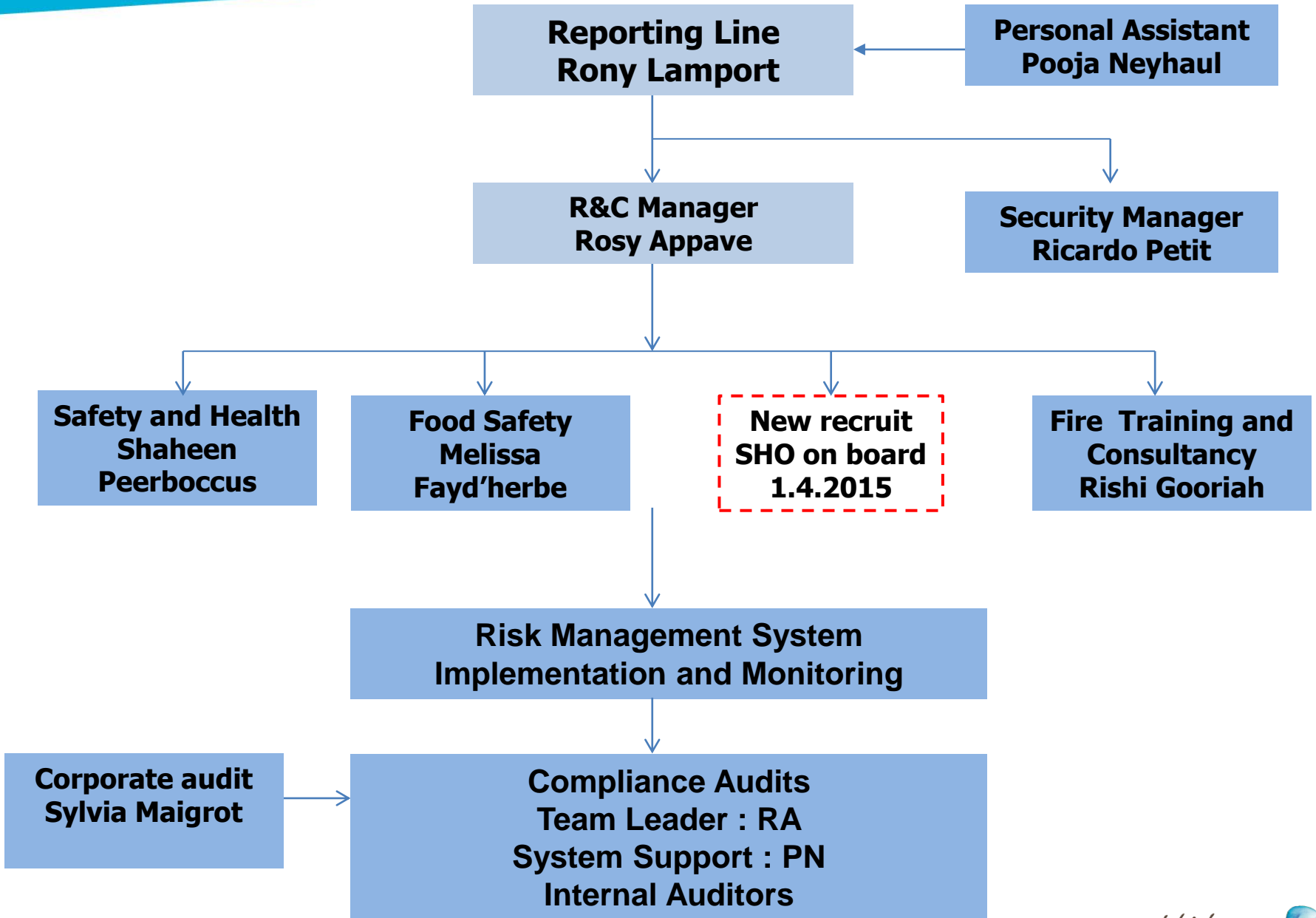


BOUTIQUE HOTEL MAURITIUS
paradise cove ❁

A unique boutique hotel in Mauritius...



Risk & Compliance Management Department



The Risk Assessment process is the process of evaluating the RISKS to safety and Health from HAZARDS at work, whereby all hazards are identified and evaluated taking into consideration existing control measures.

Potential Severity (PS)	Minor Injury (All other injuries or accidents)	Enter 1	Significant Injury (Injury leave <or = 3 days)	Enter 2
	Serious Injury (Injury leave > 3 days)	Enter 3	Fatal Injury (Death or Major Injury)	Enter 4
Likelihood (L)	Unlikely (Could happen but rarely)	Enter 1	Possible (Possibility for incident exist)	Enter 2
	Likely (Occasionally)	Enter 3	Very likely (Could happen frequently)	Enter 4

Potential Severity x Likelihood = Risk

HIGH (8-16)	MEDIUM (3-6)	LOW (1-2)
Immediate Action	Within 3 months	Keep Monitoring to keep risk at low level

EMERAUDE BEACH ATTITUDE - Risk Assessment

Task	Hazard	Exposure	Control in place	Level of Risk			Further action/s	Responsibility for action	Completion date
				PS	L	Risk			
Walking from one place to another for office purposes	Slips and trips	Staffs, Housekeeping FMS, visitors may be injured if they trip over objects or slip on spillages	-General good housekeeping. -All areas well lit, including stairs. -No trailing leads or cables. -Staff keeps work areas clear, e.g. no boxes left in walkways, deliveries stored immediately. -Signage when slippery.	1	2	2	None	Office Staffs Housekeeping Department	Ongoing
Handling of paper, files and office equipment etc	Manual handling Staff risk injuries or back pain from handling heavy/bulky objects	Staff risk injuries or back pain from handling heavy/bulky objects	-High shelves for light objects only -Should not try to lift objects that look or appear too heavy to handle. -Ensure cooperation among Fms while handling heavy objects.	1	2	2	None	Office Staffs	Ongoing

Hazard
Biological: bacteria, fungi, viruses
Chemical: gases, dust, metals, solvents
Physical: noise, heat
Slips and trips
Manual handling Staff risk injuries or back pain from handling heavy/bulky objects
Working at height
Electrical hazard shocks or burns from faulty electrics, including portable electrical equipment ,Pc ,printers
Fire and explosion
Ergonomic problems

Hazard
Skin irritation
Cut with knives

Psychological: stress,
Food

- OSHA2005 , Sections 10 & 11
- OSH (Transportation of Employees) Regulations 2014
- OSH (Control of Asbestos at Work) Regulations 2014
- OSH (Safety of Scaffolds) Regulations 2013
- OSH (Work at Height) Regulations 2013
- OSH (Employees' Lodging Accommodation) (Amendment) Regulations 2012
- OSH (Personal Protective Equipment) Regulations 2012
- OSH (Safety of Lifts at Work) Regulations 2012
- OSH (Noise at Work) Regulations 2012
- OSH (Scaffold) Regulations 2011
- OSH (Electricity at Work) Regulations 2009
- OSHW (Woodworking machines) Regulations 1989
- OSHW (First –Aid)(Amendments) Regulations 2003

➤ **Local Legislation**

Food Act 1999

EPA 2002

Tourism Authority Act 2006

Dangerous Chemicals Control Act 2004

Pleasure Craft Act

Tourism Authority Act 2006

Inflammable Liquids and Substances Regulations 1953

Public Health (restrictions on tobacco products) regulations 2008

➤ **FTO Guidelines**

Tourism Accommodation Health & Safety Technical Guide July 2012

Training/Education programs regarding "OSHMS" or "Hazard Prediction"

➤ IOSHM implements training courses on risk assessment and training on regulations issued by the ministry of Labour

➤ OSH and IOSHM organises workshop and invite safety and health officers to attend to assist them in implementation of risk assessment as well as introducing or establishing an OSHMS appropriately.

Mr. Lawrence Bamber who is a Chartered Fellow of Institution of Occupational Safety and Health (IOSH, UK), Professional Member of ASSE, Fellow of the Institute of Risk Management and also the past president of IOSH, Uk was invited by IOSHM to conduct a workshop on risk assessment

PARTICIPATION FORM

Company/Organisation Details	
Name of Company/Organisation	Telephone Number
Address:	Fax No:
Contact/Responsible Person	Email
Position	Mobile No.
Details of Participants	
Participant 1	
Name: (Mr. /Mrs. / Ms)	Telephone No
Job Title	Email
Veg <input type="checkbox"/> Non Veg <input type="checkbox"/>	Mobile No
Participant 2	
Name: (Mr. /Mrs. / Ms)	Telephone No
Job Title	Email
Veg <input type="checkbox"/> Non Veg <input type="checkbox"/>	Mobile No
Participant 3	
Name: (Mr. /Mrs. / Ms)	Telephone No
Job Title	Email
Veg <input type="checkbox"/> Non Veg <input type="checkbox"/>	Mobile No

PAYMENT DETAILS
 Participation Fee:
Rs 8,000 per participant
 Cheques shall be drawn to the order of the
Institution of Occupational Safety & Health Management (IOSHM)
 and shall accompany the Application Form.
 Payment shall be made at the

Signature of Responsible Person: _____
 Date: _____

Send application form to:
Institution of Occupational Safety & Health Management (IOSHM),

Understanding the OSH (Noise at Work) Regulations 2012 and New OSH Regulations 2011/12



- OSH (Noise at Work) Regulations 2012
- OSH (PPE) Regulations 2012
- OSH (Scaffold) Regulations 2011
- OSH (Safety of Lifts at Work) Regulations 2012
- OSH (Employees' Lodging Accommodation) Regulations 2011



IOSHM Seminar

Venue: Henessy Park Hotel, Ebene
Main Guest Speaker:
Dr. Ben Veeraragoo
Date: 24 - 25 April 2013



Training programme is crucial at Attitude Resorts at all following training courses and deliver for the 10 hotels

- Safety at work for employees
- Safety at work for Managers and supervisors
- ISO system on OHSAS18001 approach
- On job and toolbox meeting
- Team Building

SAFETY STARTS WITH





Safety at work for employees

Welcome and Introduction

Module 1

Safety and Health Legislation

Group Exercise and presentation

Hazard and Risks

Group Exercise and presentation

Module 2

Accident prevention and procedures

PPE

First Aid

Chemical safety

Module 3

Manual handling

Work Equipment and guarding

Safety signs

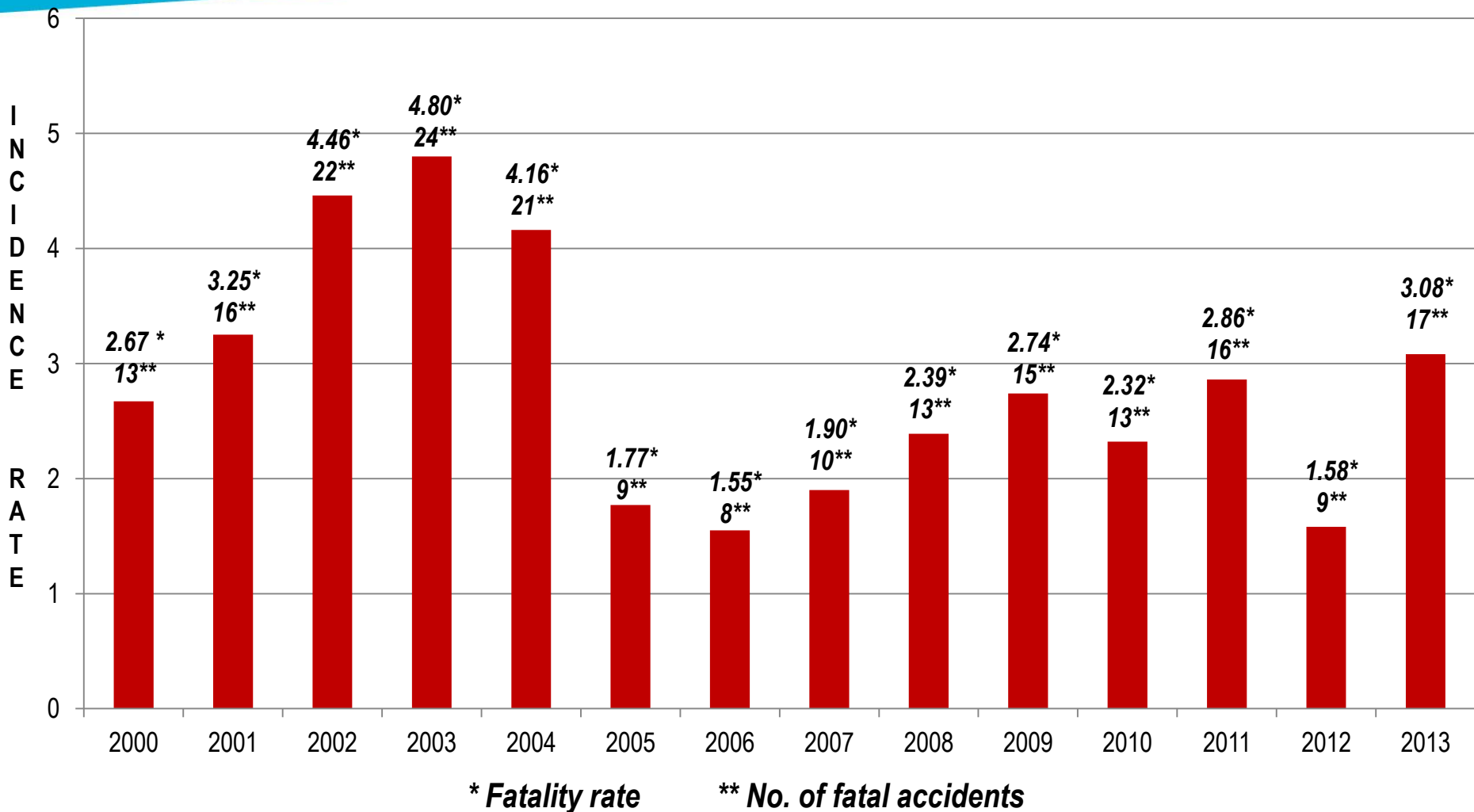
Electrical safety

Food Safety

Fire safety



NOTIFIABLE FATAL OCCUPATIONAL ACCIDENTS IN MAURITIUS (2000 TO 2013)



Fatality Rate = (Fatalities x 100,000) / Employment

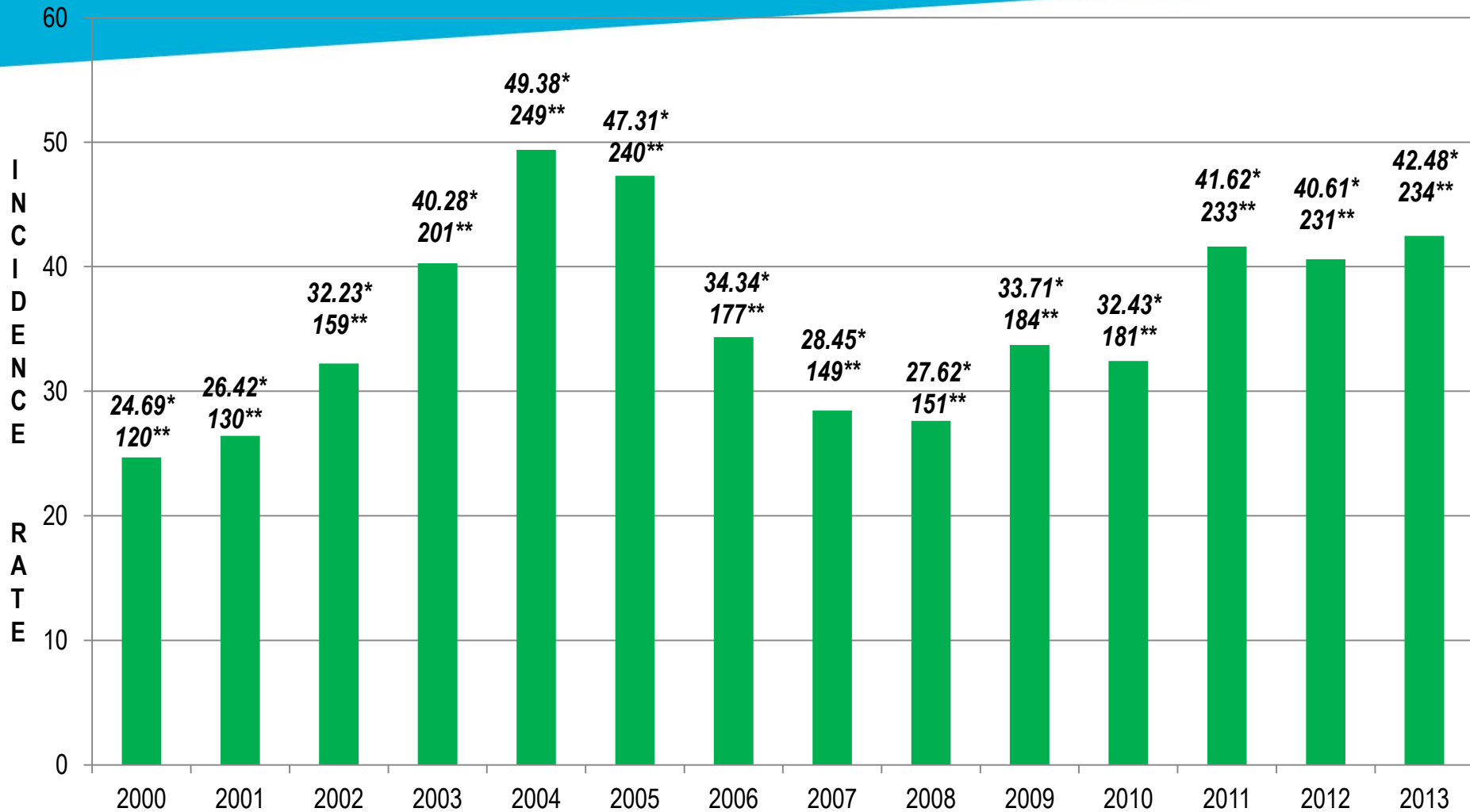
Source:

** Ministry of Labour, Industrial Relations and Employment (notifiable occupational accidents under Section 85 of the Occupational Safety and Health Act 2005).



Economic Activities	2007	2008	2009	2010
Agriculture, hunting and forestry	0	2	1	0
Fishing	0	0	0	0
Mining and quarrying	0	0	0	0
Manufacturing (EPZ and non EPZ)	3	2	0	2
Electricity, gas and water supply	0	0	0	0
Construction	7	7	10	9
Wholesale and retail trade, repair of motor vehicles, motorcycles and personal and household goods	0	0	0	0
Hotels and restaurants	0	0	0	0
Transport, storage and communication	0	2	0	0
Financial intermediation	0	0	0	0
Real estate, renting and business activities	0	0	0	1
Public administration, defence and compulsory social security	0	0	2	0
Education	0	0	1	0
Health and social work	0	0	0	0
Other community, social and personal service services	0	0	0	0
Private households with employed persons	0	0	1	1
Extraterritorial organizations and bodies	0	0	0	0
Not classifiable by economic activities	0	0	0	0
SUB TOTAL	10	13	15	13

(2000 TO AS AT 25 NOVEMBER 2013)



* **Fatality rate**

** **No. of non fatal accidents**

Fatality Rate = (Fatalities x 100,000) / Employment

Source:

** Ministry of Labour, Industrial Relations and Employment
(notifiable occupational accidents under Section 85 of the Occupational Safety and Health Act 2005).



STATISTICS OF ACCIDENTS AT WORK - NON FATAL

Economic Activities	2007	2008	2009	2010
	Notifiable	Notifiable	Notifiable	Notifiable
Agriculture, hunting and forestry	16	15	25	18
Fishing	1	1	1	2
Mining and quarrying	0	0	0	0
Manufacturing (EPZ and non EPZ)	54	50	56	55
Electricity, gas and water supply	4	3	6	4
Construction	30	35	40	38
Wholesale and retail trade, repair of motor vehicles, motorcycles and personal and household goods	9	5	3	6
Hotels and restaurants	11	6	14	17
Transport, storage and communication	8	7	18	10
Financial intermediation	0	0	0	0
Real estate, renting and business activities	8	4	5	17
Public administration, defence and compulsory social security	8	18	8	11
Education	0	1	1	0
Health and social work	0	0	0	1
Other community, social and personal service services	0	6	7	2
SUB TOTAL	149	151	184	181

ACCIDENTS AT WORK - NON FATAL

14 levels scaffolding fell in 2010 causing 19 workers from Ireko Construction Company injured, three seriously



Thank you,
Merci
ありがとう

attitude 

